



NTSC U/C

PlayStation



SLUS-00795
3114042

SHANGHAI TRUE VALOR



SUNSOFT

WARNING: READ BEFORE USING YOUR PLAYSTATION® GAME CONSOLE.

A very small percentage of individuals may experience epileptic seizures when exposed to certain light patterns or flashing lights. Exposure to certain patterns or backgrounds on a television screen or while playing video games, including games played on the PlayStation game console, may induce an epileptic seizure in these individuals. Certain conditions may induce previously undetected epileptic symptoms even in persons who have no history of prior seizures or epilepsy. If you, or anyone in your family, has an epileptic condition, consult your physician prior to playing. If you experience any of the following symptoms while playing a video game – dizziness, altered vision, eye or muscle twitches, loss of awareness, disorientation, any involuntary movement, or convulsions – IMMEDIATELY discontinue use and consult your physician before resuming play.

WARNING TO OWNERS OF PROJECTION TELEVISIONS:

Do not connect your PlayStation game console to a projection TV without first consulting the user manual for your projection TV, unless it is of the LCD type. Otherwise, it may permanently damage your TV screen.

HANDLING YOUR PLAYSTATION DISC:

- This compact disc is intended for use only with the PlayStation game console.
- Do not bend it, crush it or submerge it in liquids
- Do not leave it in direct sunlight or near a radiator or other source of heat.
- Be sure to take an occasional rest break during extended play.
- Keep this compact disc clean. Always hold the disc by the edges and keep it in its protective case when not in use. Clean the disc with a lint-free, soft, dry cloth, wiping in straight lines from center to outer edge. Never use solvents or abrasive cleaners.

SHANGHAI[®]

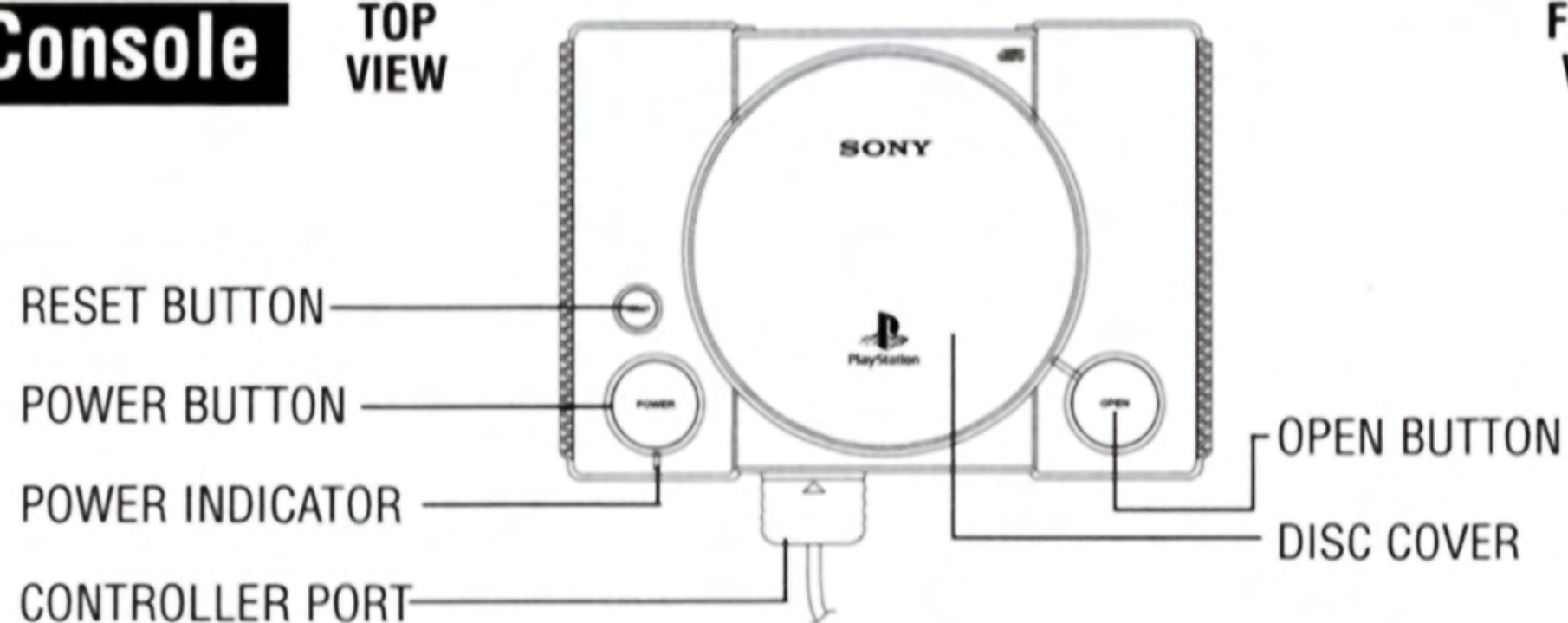
TRUE VALOR[™]

WELCOME

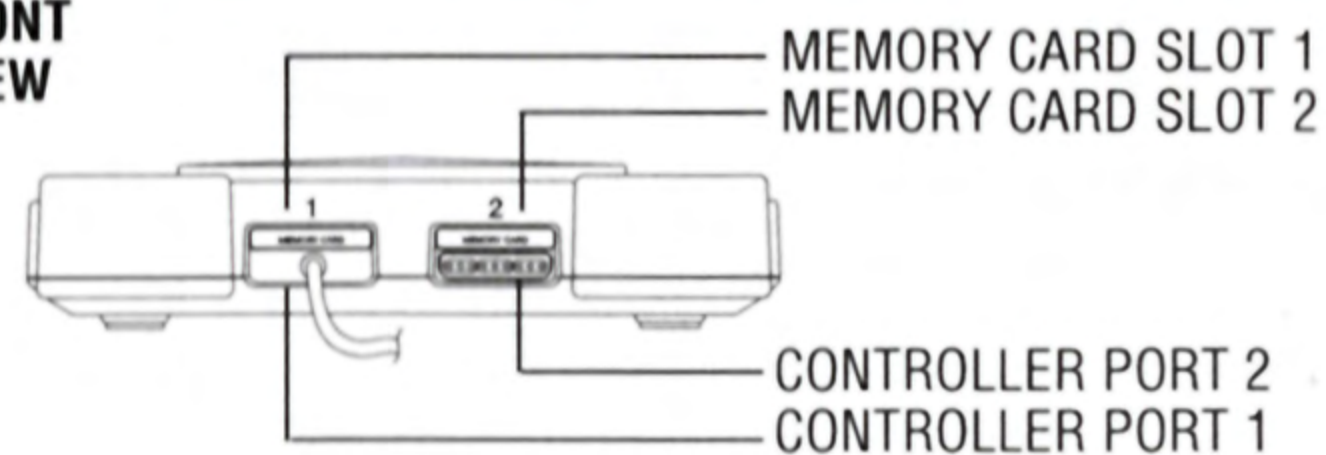
Thank you for buying Sunsoft's "Shanghai True Valor" for the PlayStation[®]. Please read this guide carefully before use to find out how to play the game. Keep the guide in a safe place for future reference.

Console

TOP VIEW



FRONT VIEW



Set up your PlayStation game console according to the instructions in its Instruction Manual. Make sure the power is off before inserting or removing a compact disc. Insert the Shanghai True Valor disc and close the disc cover. Insert game controllers and turn on the PlayStation game console. Follow on-screen instructions to start a game.



Contents

The "True Valor" Story5
Using the controller6
Using the mouse8
Starting a game9
Options10
Original mode13
Arcade mode16
Classic Shanghai17
Battle Shanghai23
Rolling Shanghai28
Bonus stages30

The "True Valor" Story



Many years ago, there was a land called the Dragon Kingdom. This land was ravaged by endless wars, and its people were left starving from hunger...

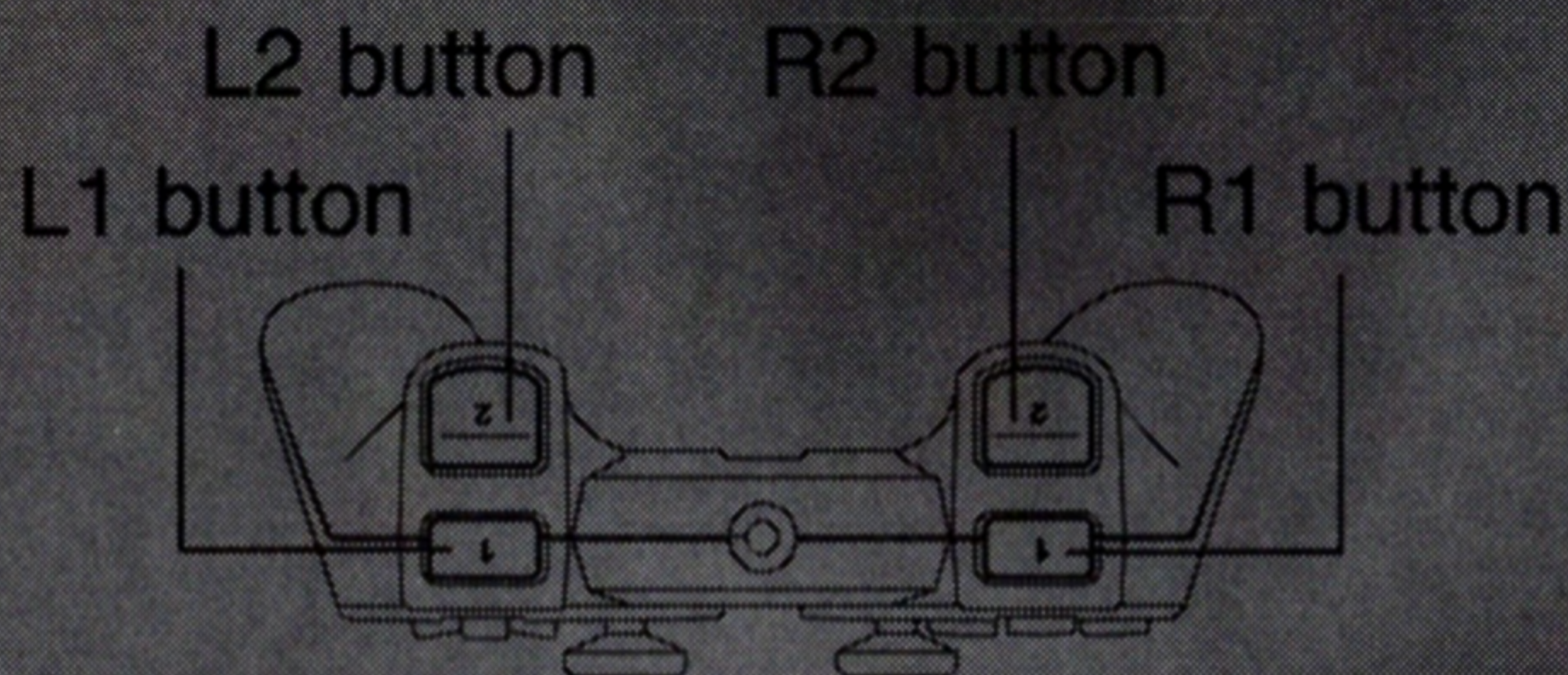
This story is the tale of the brave warrior who single-handedly united the Dragon Kingdom through skill, perseverance, and "True Valor."



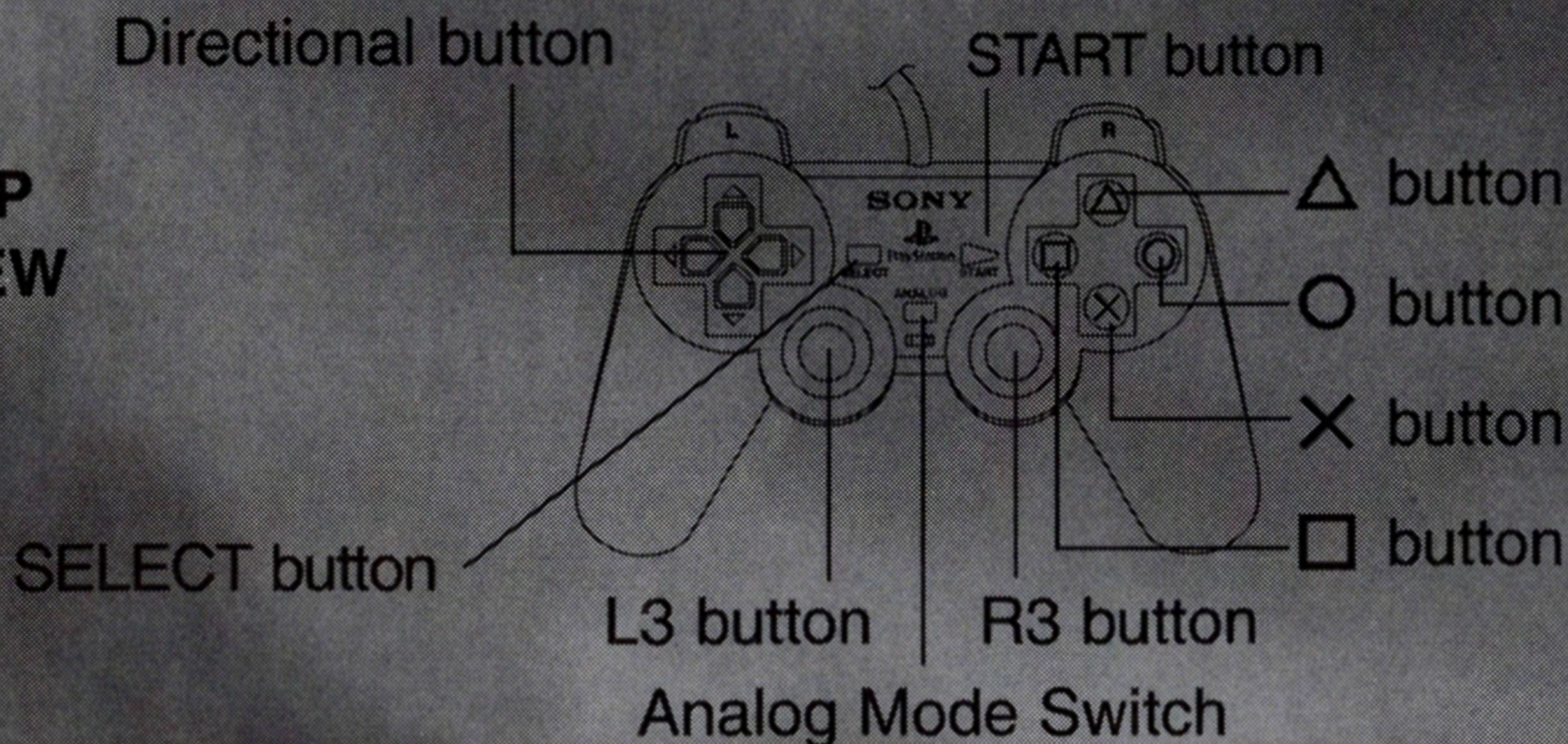
Using the Controller

DUAL SHOCK™ ANALOG CONTROLLER

FRONT
VIEW



TOP
VIEW



Shanghai True Valor is compatible with the Dual Shock™ analog controller. It vibrates whenever your opponent removes Special Power Tiles in Battle Shanghai mode.

Dual Shock™ analog controller's button control is the same as the regular controller.

Using the Controller



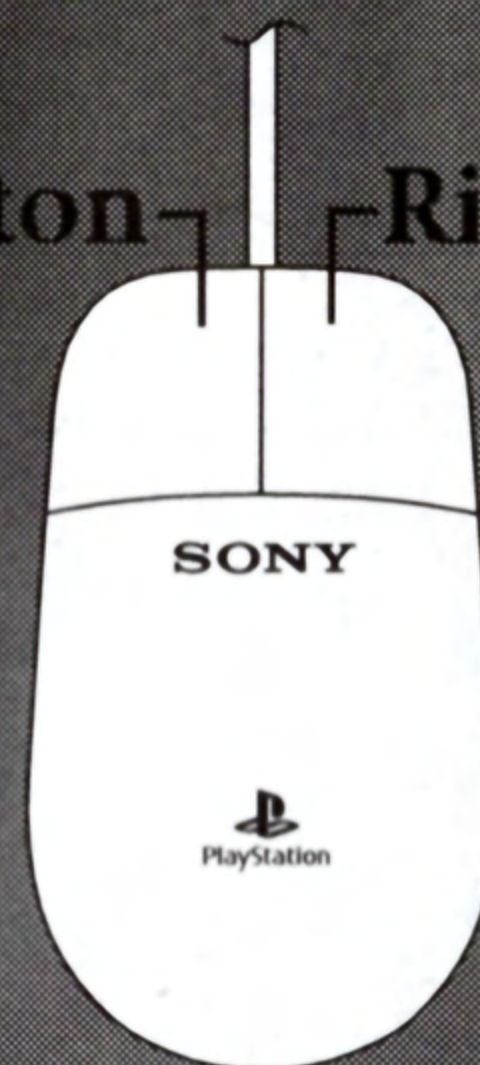
	<u>OPERATION IN ARCADE MODE</u>	<u>OPERATION IN ORIGINAL MODE</u>
DIRECTIONAL BUTTON	Moves cursor and selects command	
○ BUTTON	Cancels command or tile. If no tile is selected, switches Help and Back display on/off	Cancels command or tile. If no tile is selected, switches Help and Back display on/off (Battle Shanghai mode only)
× BUTTON	Confirms command or selects tile	
△ BUTTON	Speeds up cursor movement (Rolling Shanghai mode only).	
□ BUTTON	Switches viewpoint when pressed at same time as a directional button (Classic Shanghai mode only).	
START BUTTON	Starts game or pauses game during play.	Opens and closes menu window.
L1 BUTTON	Rotate the tile cube to the left (Rolling Shanghai mode only).	
R1 BUTTON	Rotate the tile cube to the right (Rolling Shanghai mode only).	



Using the mouse

This table is for right-handed users. If you are using a Mouse that is set to the "left-handed" setting, then the right and left button functions are reversed.

Left Button Right Button



OPERATION IN ARCADE MODE

OPERATION IN ORIGINAL MODE

MOVE MOUSE

Moves cursor

LEFT BUTTON
CLICK

Confirm command or select tile

LEFT BUTTON
HOLD DOWN

Changes viewpoint (Classic Shanghai mode only)

LEFT BUTTON
DOUBLE CLICK

Starts game or pauses game during play

Opens or closes menu window

RIGHT BUTTON
CLICK

Cancels command or tile
If no tile is selected, switches Help and
Back display on/off

Cancels command or tile
If no tile is selected, switches Help and
Back display on/off
(Battle Shanghai mode only)

Starting a game



Insert the Shanghai True Valor disc into the PlayStation® and insert a MEMORY CARD into MEMORY CARD Slot 1. When the power is switched on, a title screen will appear. Press START or the X button to bring up the game menu. Choose the mode you want to play and press the X button.

Saving a game:

If you are using a MEMORY CARD, the current position of the game is recorded automatically. When the game is restarted, the recorded game position is automatically loaded.

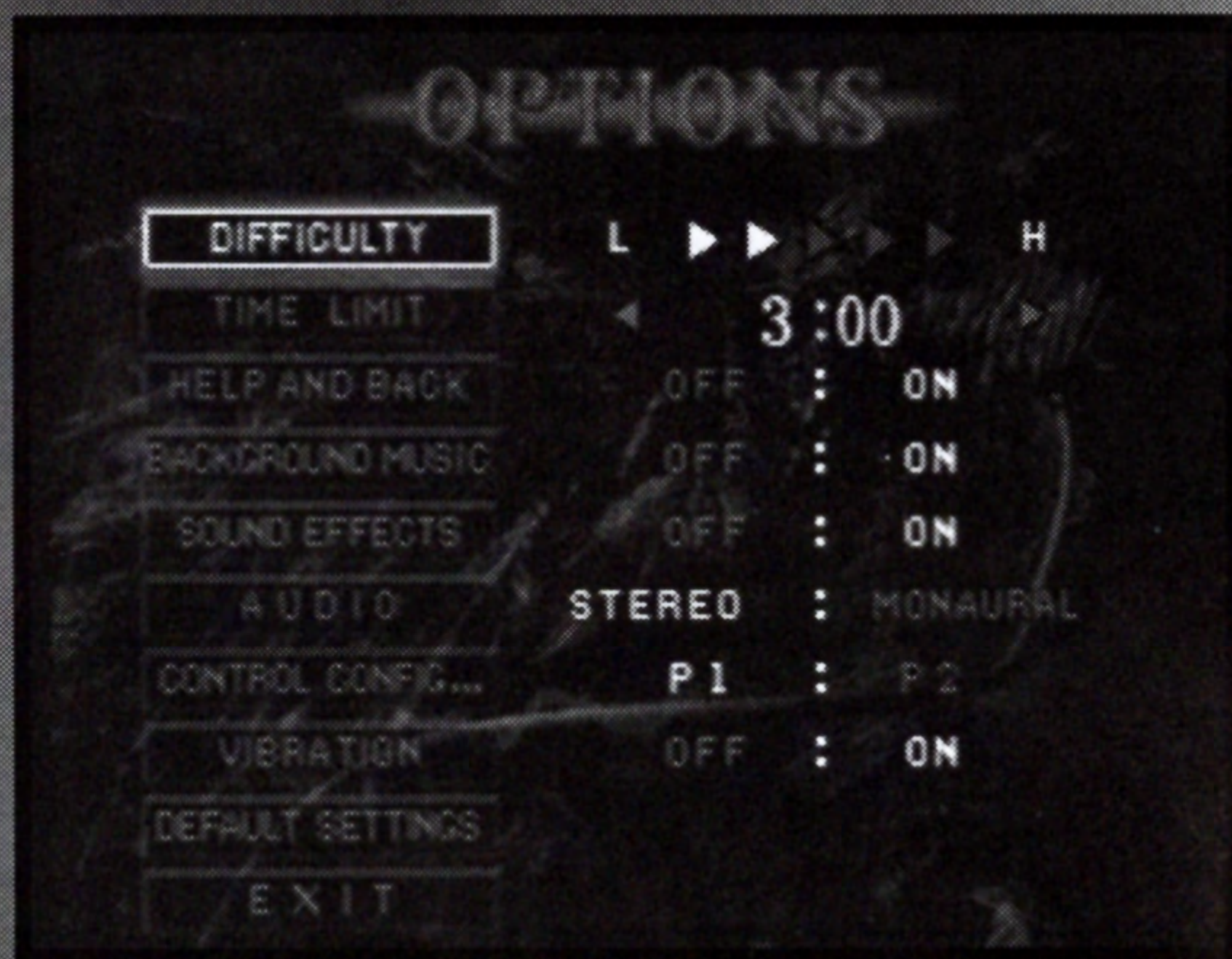


It is advised that you do not insert or remove peripherals or MEMORY CARDS once the power is turned on.

Make sure there are enough free blocks on your MEMORY CARD before commencing play.

Options

If you choose "OPTIONS" on the mode selection screen and then press the **X** button, you can change the game settings, such as the game difficulty or the time limit when playing in Arcade mode. Select the item you want to change and press the **X** button to enter setting mode. Use the left and right directional buttons to change the setting. Press the **X** button again to confirm the setting you have made.



Difficulty You can choose from 5 levels of difficulty. The more arrow symbols lit up, the harder the game.

Time limit The time limit can be set between one and six minutes, or it can be set to infinity (∞).

Options



Help and Back This option sets whether you can get Help (computer uses a different color to show the tiles you can take) or go Back (put back the most recently removed pair of tiles), during the game. (Each function can be used a maximum of three times in one game.)

Background Music Turns background music on/off.

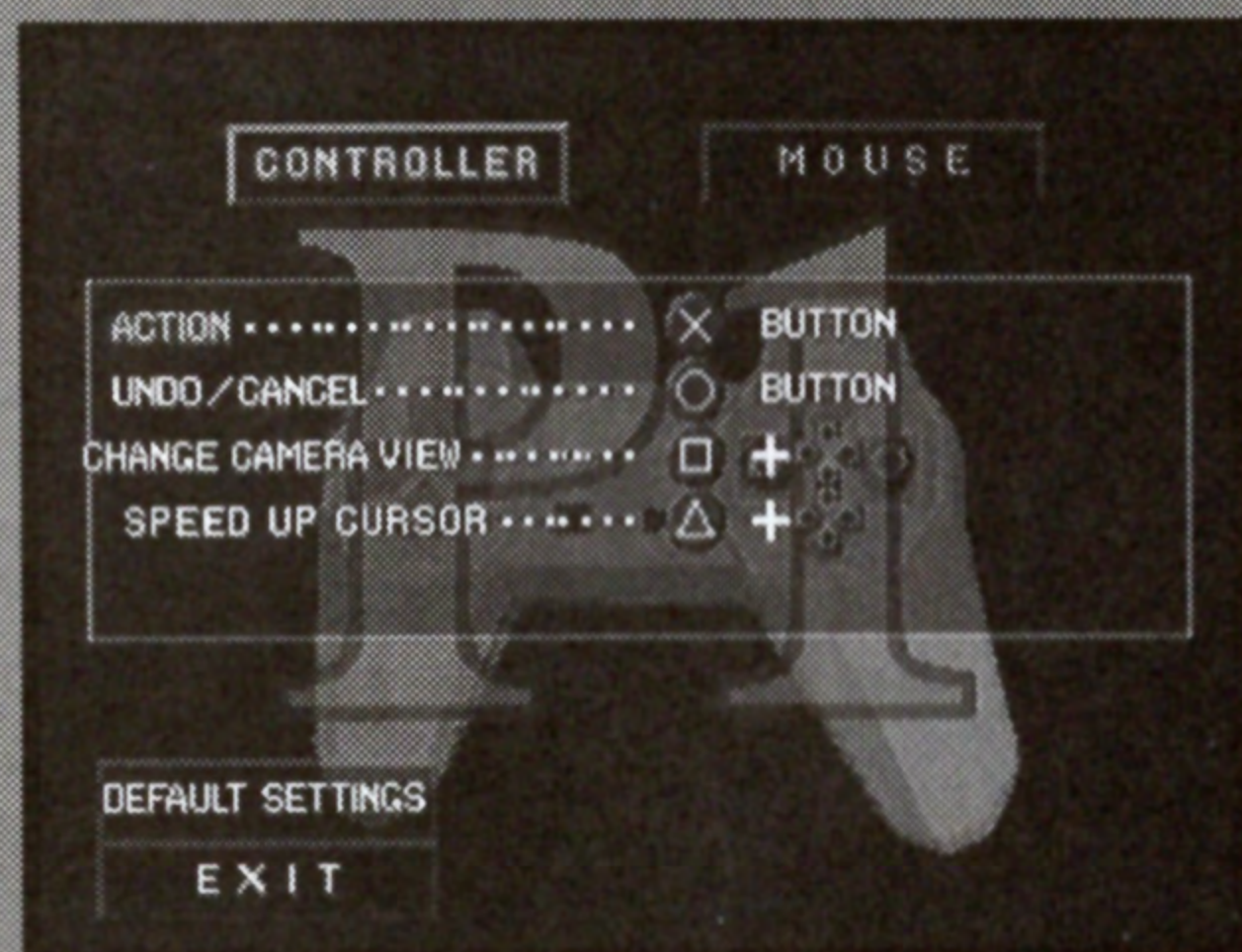
Sound effects Turns sound effects on/off.

Audio Selects stereo or mono output of game sound. You should set this to match the television or audio system you are using. If this is set to "stereo" when using a mono-sound TV, then all sounds may not be heard properly.

Control Configuration This changes the control button settings used in the game. If you select P1 or P2 and press the X button, the configuration screen will appear.



Options

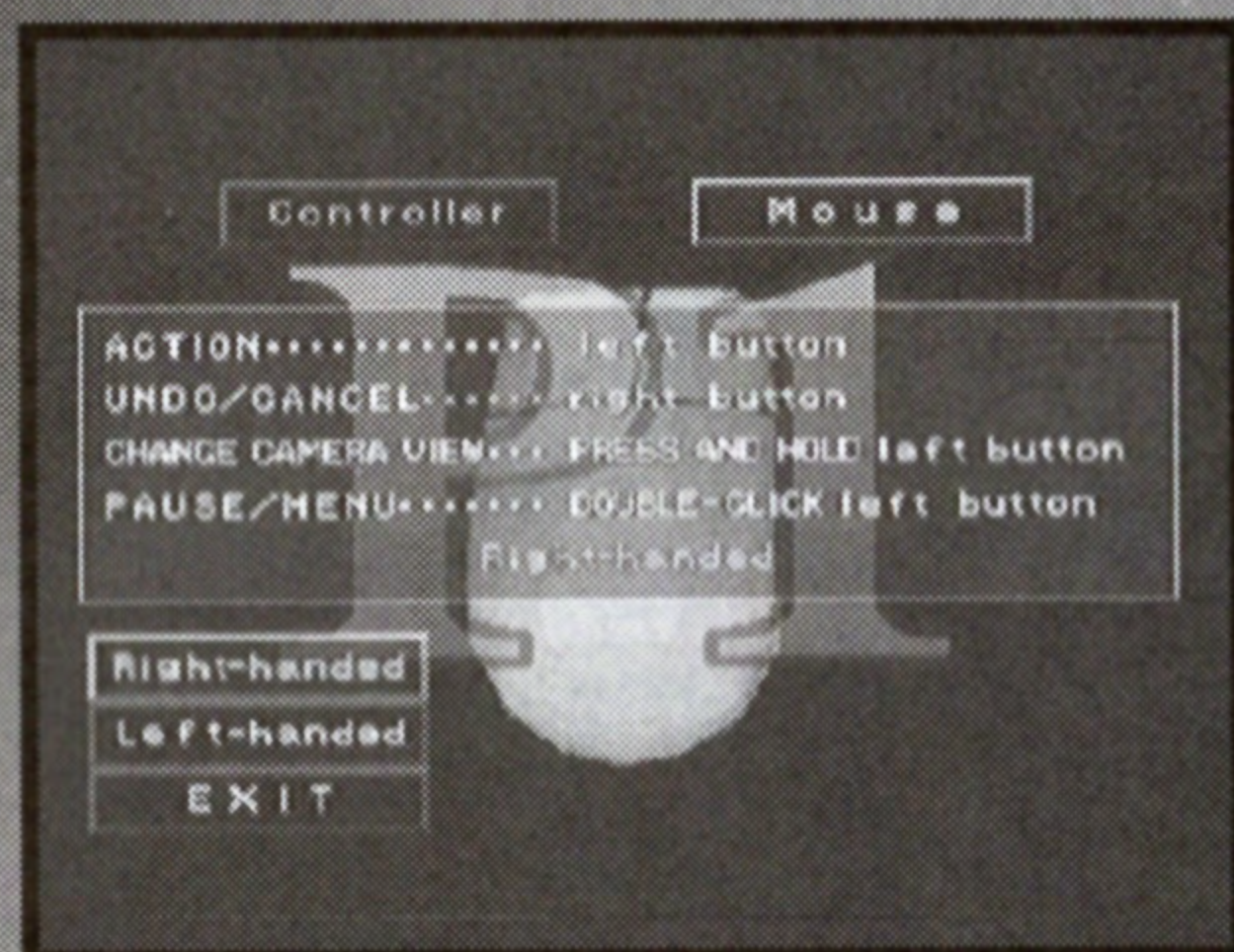


Example: Changing "Cancel" function from the O button to the Δ button.

1. Use the directional buttons to highlight "Cancel".
2. Press the Δ button.
3. The screen will change to show the button you have pressed.

DEFAULT SETTINGS (On Controller screen) - return to initial settings.

EXIT - return to the OPTIONS menu.



To change the Mouse from its default right handed setting, simply highlight "left-handed" and press the left Mouse button. To change back to right-handed mode highlight "right-handed" and press the right Mouse button.

Original Mode

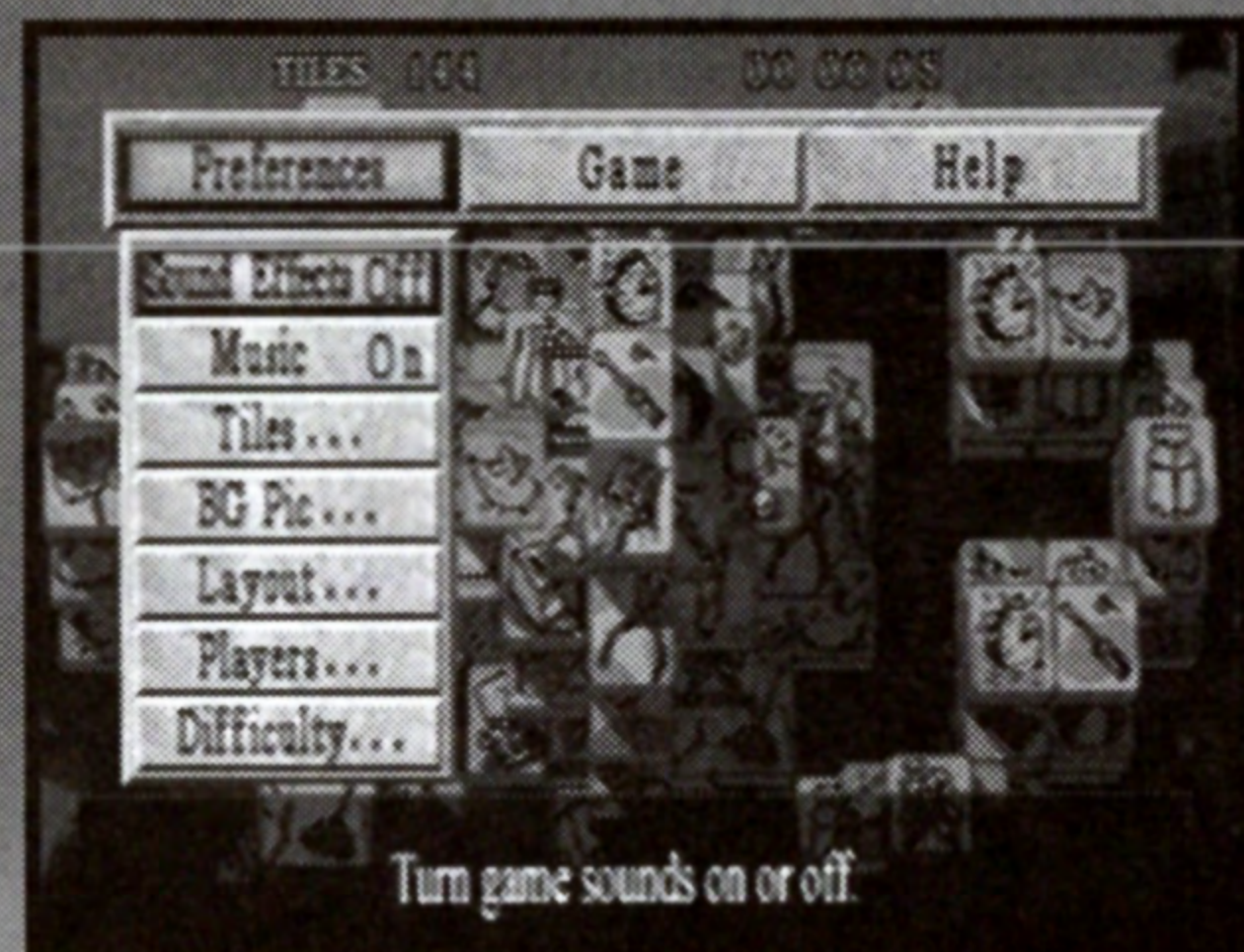
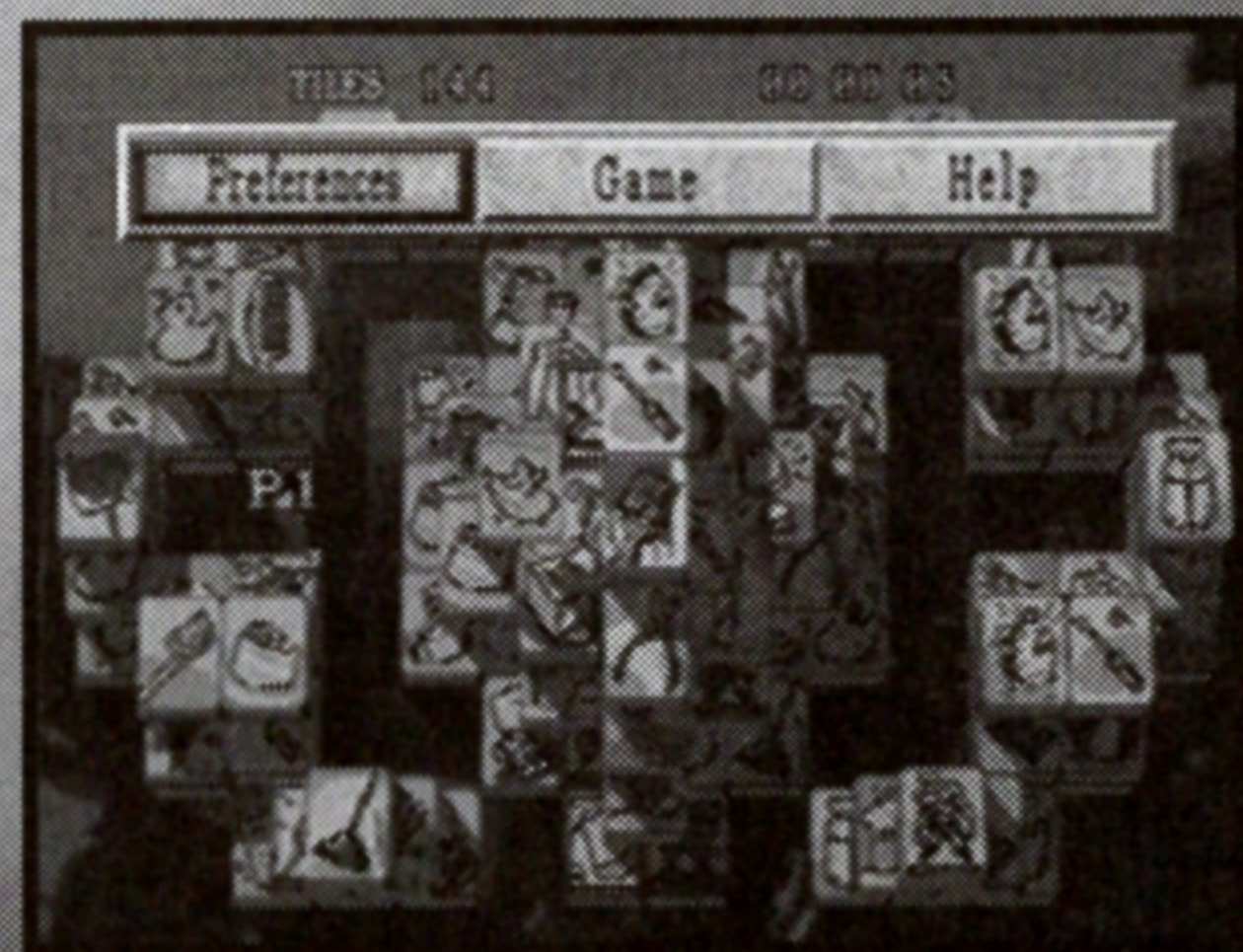


Play the classic game of Shanghai in its original form. There are three games.

“Classic Shanghai” starts automatically when you select Original mode; you can switch freely between Classic Shanghai, Battle Shanghai, and Rolling Shanghai, and you can change the layouts, tile sets, music, or whatever you want, any time you wish during an Original Mode game.

By pressing the Start button during the game, you can pause the screen and change the settings or game mode. Use the left and right directional buttons to choose the option you want and then press the **X** button to open up a menu window. Use the up and down directional buttons to make your selection and press the **X** button again. To close a menu window press the **O** button. To return to the game screen, press the Start button.

You need an opponent if you want to play Battle Shanghai (the computer will not play against you) in Original Mode.





Original Mode

Preferences

Sound effects Turns sound effects on/off.

Music Turns music on/off.

Tiles You can choose from three tile sets. Press the X button to open a selection window, choose the tile set you want, and then press the X button again.

BG pic One of 30 different background pictures can be selected. Press the X button to open a selection window, choose your preferred background, and then press the X button again.

Layout You can choose between 25 types of tile layout. Press the X button to open a selection window, choose the layout you like, and then press the X button again. The layout you have selected will be set up. If you change the layout during play, then the game will start again from the beginning.

Players Select the number of players. Press the X button to open a selection window, choose the number of players and press the X button again.

Difficulty The game difficulty can be set to one of five different levels. Press the X button to open a selection window, select a difficulty level, and press the X button again. The more arrow symbols are lit up, the harder the game. The tile layout will be set up. If you change the difficulty level during play, then the game will be restarted.

Game

New Start Start a new game, with the same layout but a new arrangement of tiles.

Retry Start the game over again, with the same layout and the same arrangement of tiles.

Game select This option allows you to switch to different games. Press the X button to open a selection window, select the game mode you want to play, and press the X button again. The game will restart in the mode you have chosen.

Original Mode



Arcade mode Stop the Original Mode game and switch to Arcade Mode.
Exit End this game and return to the beginning of the game.

Help

Show all moves The game will highlight all available matches in green.

Back one move Puts back the most recently removed matching pair.

Show what's left The game will organise all remaining tiles into stacks so that you can see exactly what's left on the screen and use that knowledge strategically.

Shuffle Shuffle the remaining tiles. (Depending on the position of the tiles, this may mean that you are suddenly unable to make a move.)

Rules Display an explanation of the game mode you are currently playing.

End of game

When the game is cleared

Same Pattern Restart same game.

Quit game Quit Original mode and return to title screen.

When continuing game

Same pattern Play the game from the beginning using the same arrangement of tiles in the layout.

New pattern Play the game from the beginning using a different arrangement of tiles in the layout.

Back one move Puts back the most recently removed matching pair.

Shuffle Using the same arrangement, the tiles are shuffled and the game can continue.



Arcade Mode

In this mode, the game contents are exactly the same as the arcade version of "Shanghai True Valor": the goal is to play through all the levels within the time limit and get the highest possible score.

On the Arcade Mode title screen, press the Start button, select "GAME START" and then press the X button. If you choose "EXIT" you will return to the beginning of the game.



Classic Shanghai



This mode is for playing a Classic Shanghai game, arcade style. Combined play involving two players is also possible.

Rules

Classic Shanghai is a game of strategy, memory, and luck. Each stage begins with 144 tiles. The object is to remove all the tiles from the layout, one pair at a time; a complete game is 25 stages (each one using a different layout). To remove a pair, the tiles must both match and be "free" at the same time. A tile is considered free if no other tile is on top of it and if it can slide out to the left, to the right, or in both directions. If a tile can only slide toward the top or the bottom of the layout, it is not free to be removed.

NOTE: There are some special tiles called "Flowers" and "Seasons" which are not identical; you can match any Flower with any Flower, and any Season matches any Season.





Classic Shanghai

Tile Set Selection

There are three types of tile sets that you can use:



Mah-Jongg
tiles



Household



Alphabet

Choose the tile set you want and press the **X** button.

Game Start

This starts a new game.

If you are using a MEMORY CARD, you can start from a stage you have played before.

Using the directional buttons, select the stage you want to play and then press the **X** button. You are able to choose a stage you have already cleared.



Classic Shanghai



Password

A password input screen appears. You can start from the stage you have selected, if you enter the correct three-letter password.



A password is displayed each time you clear a stage, so make sure you note the passwords down.

Choose a letter using the directional buttons and press the **X** button. If you make a mistake you can return to the previous letter selection, either by pressing the **O** button, or by selecting the delete arrow (next to "END") and then pressing the **X** button. When you have entered the three letters, select "END" and press the **X** button again.

Map Screen

A map is displayed and then the game starts.





Classic Shanghai

Screen layout



Pause menus

If you press the Start button during a game, a pause screen comes up and the following menu is displayed. Select the option you want and then press the X button.



- | | |
|----------------------|---|
| Continue | Continue game from current position. |
| Same Pattern | Put tiles back to original position and restart game. |
| Quit Game | End current game and return to title screen. |
| Original mode | Switch to Original mode. |

Classic Shanghai



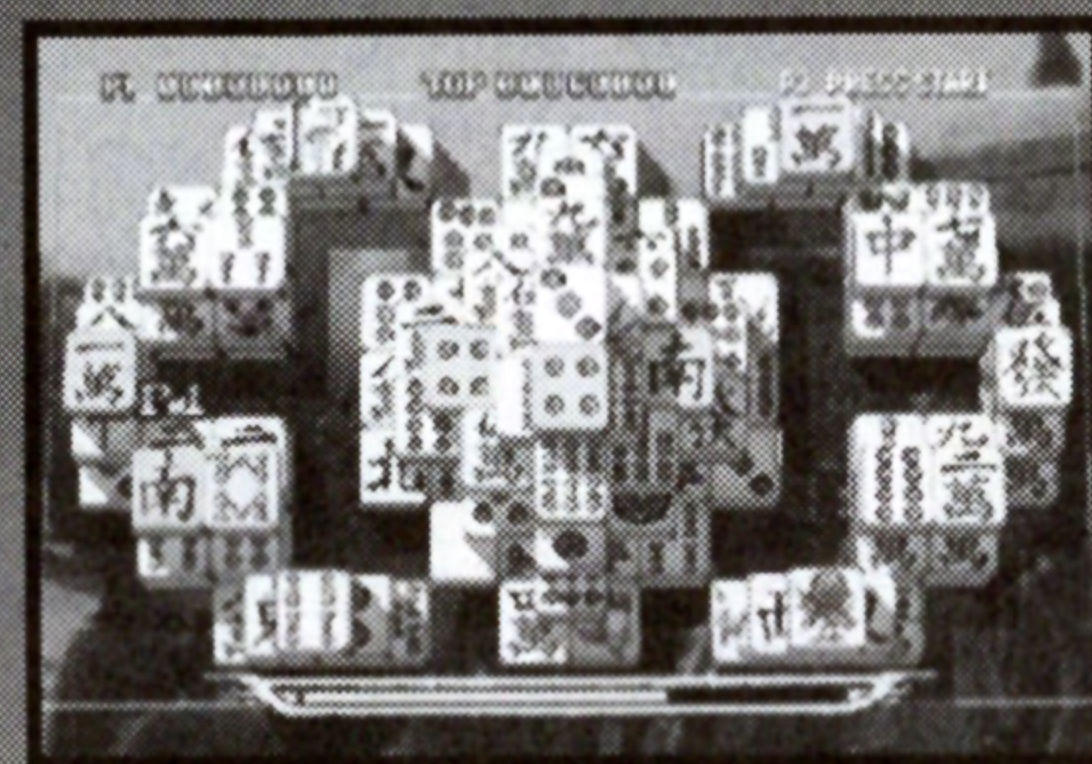
Help and Back

During a game, if you press the **O** button without selecting a tile first, a "Help" window and a "Back" window will appear at the bottom left of the screen. To use either of these functions, highlight it using the up and down directional buttons and then press the **X** button.

Help

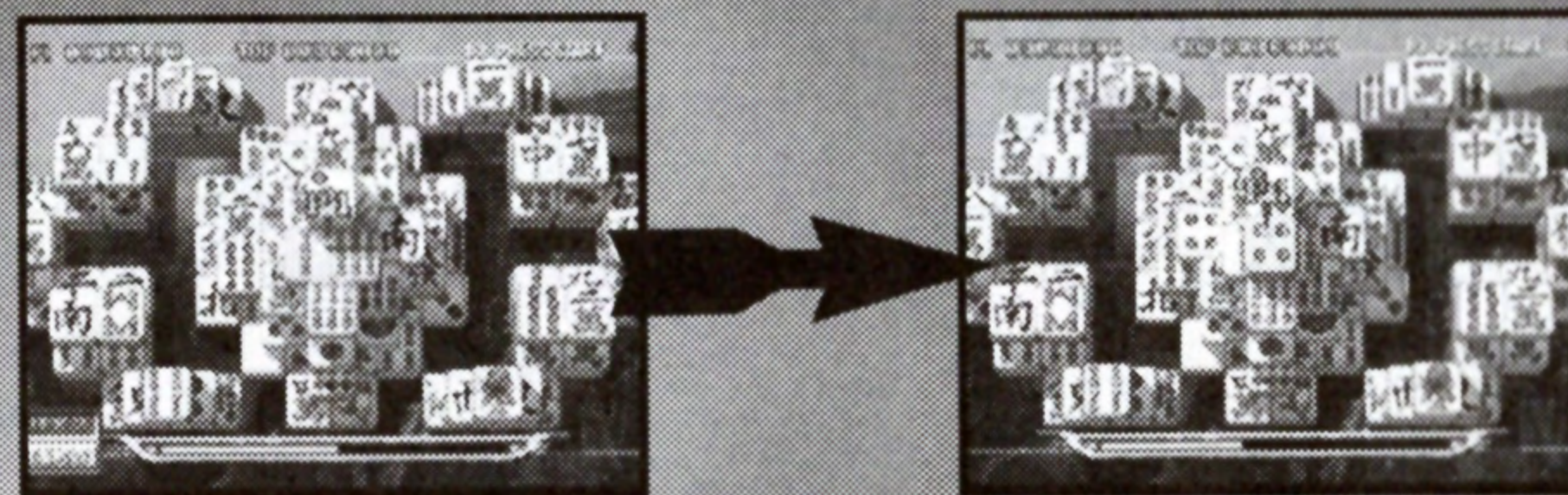
The game will highlight all available matches in green. This function can be used up to 3 times in any one game.

When you pick a set of tiles, the green display is cancelled. If there were other tiles you could have chosen, remember which tiles these were.



Back one move

Puts back the most recently removed matching pair. It can be used up to 3 times in a game.

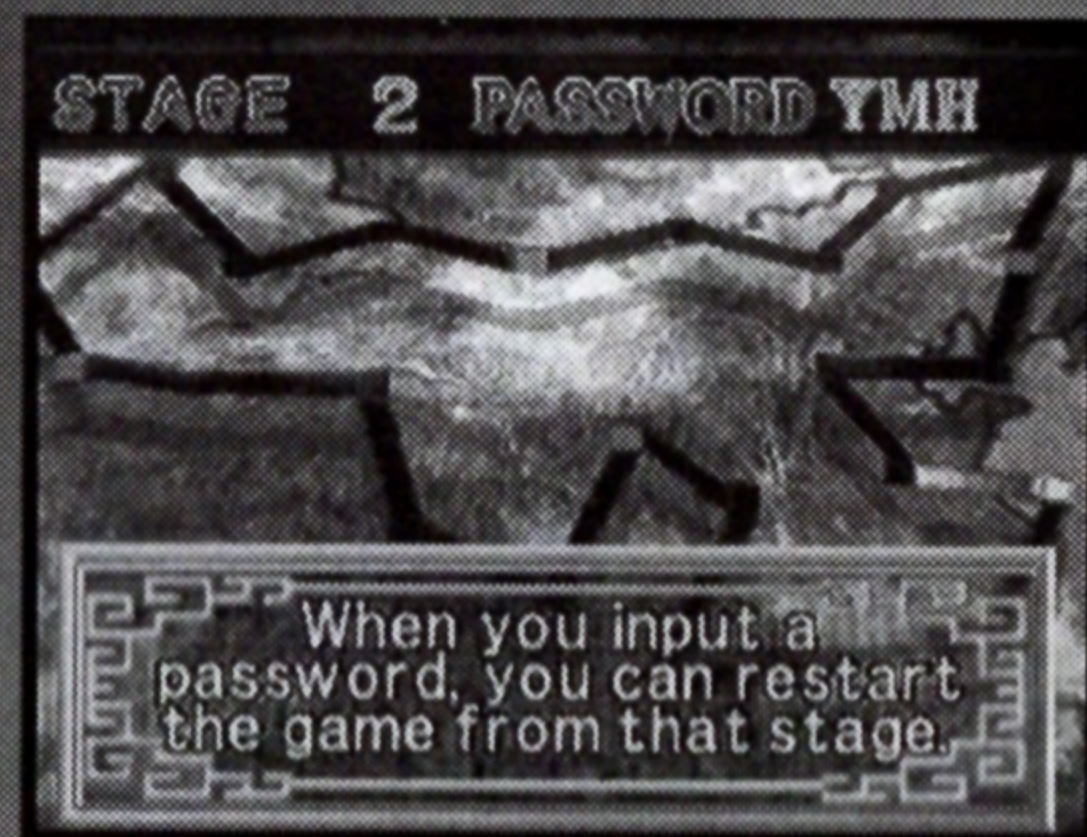




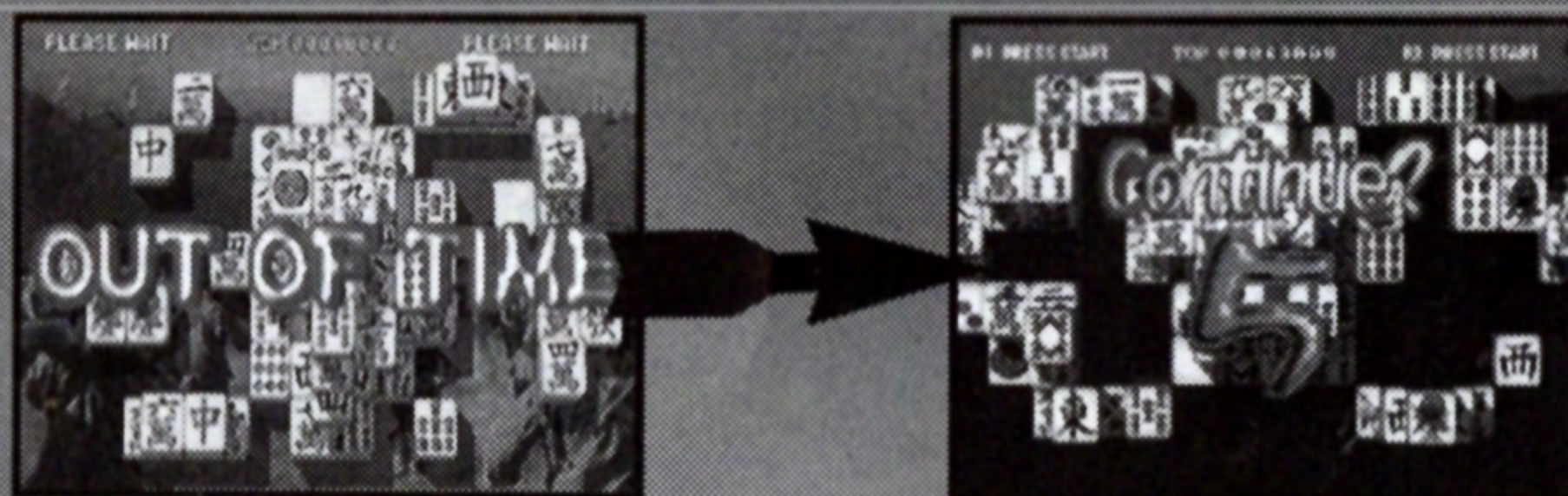
Classic Shanghai

End of Game

You clear a stage when all the tiles have been taken. After the stage is cleared, a password is displayed and the game then carries on to the next stage.



If you cannot make a valid move or you run out of time, the game ends and a Continue screen is displayed. By pressing the start button within 10 seconds, you can continue the game.



If you decide to continue, then the following menu screen will appear. Select one of these options within 20 seconds and then press the X button.

Same Pattern
New Pattern
Continue

Play from stage beginning using same pattern.
Play from stage beginning using new pattern.
Continue current game from the exact point where you'd left off before.

Battle Shanghai



This mode involves a contest between warlords set against the background of a feudal war in the mythical Dragon Kingdom. You choose one warlord from a range of five, and then compete against the other warlords to become supreme ruler of the Dragon Kingdom. By uniting the Kingdom, putting an end to the strife, you initiate a peaceful reign of harmony, proving that you have "True Valor."

Rules

You score a victory by selecting the golden tile in your own stack of tiles before your opponent. It is a best-of-three contest, so the first side to get two victories is the winner. You also win if your opponent runs out of time. Special Power Tiles are mixed in with the other tiles, and each of these have different effects when you match them.

Selecting the tiles

As in "Classic Shanghai", first of all, you select the tile set to use.

Type of contest

Select the type of contest:

Battle Against the CPU You play against the computer. However, if you have a second controller inserted into Controller port 2 you can interrupt at any time.

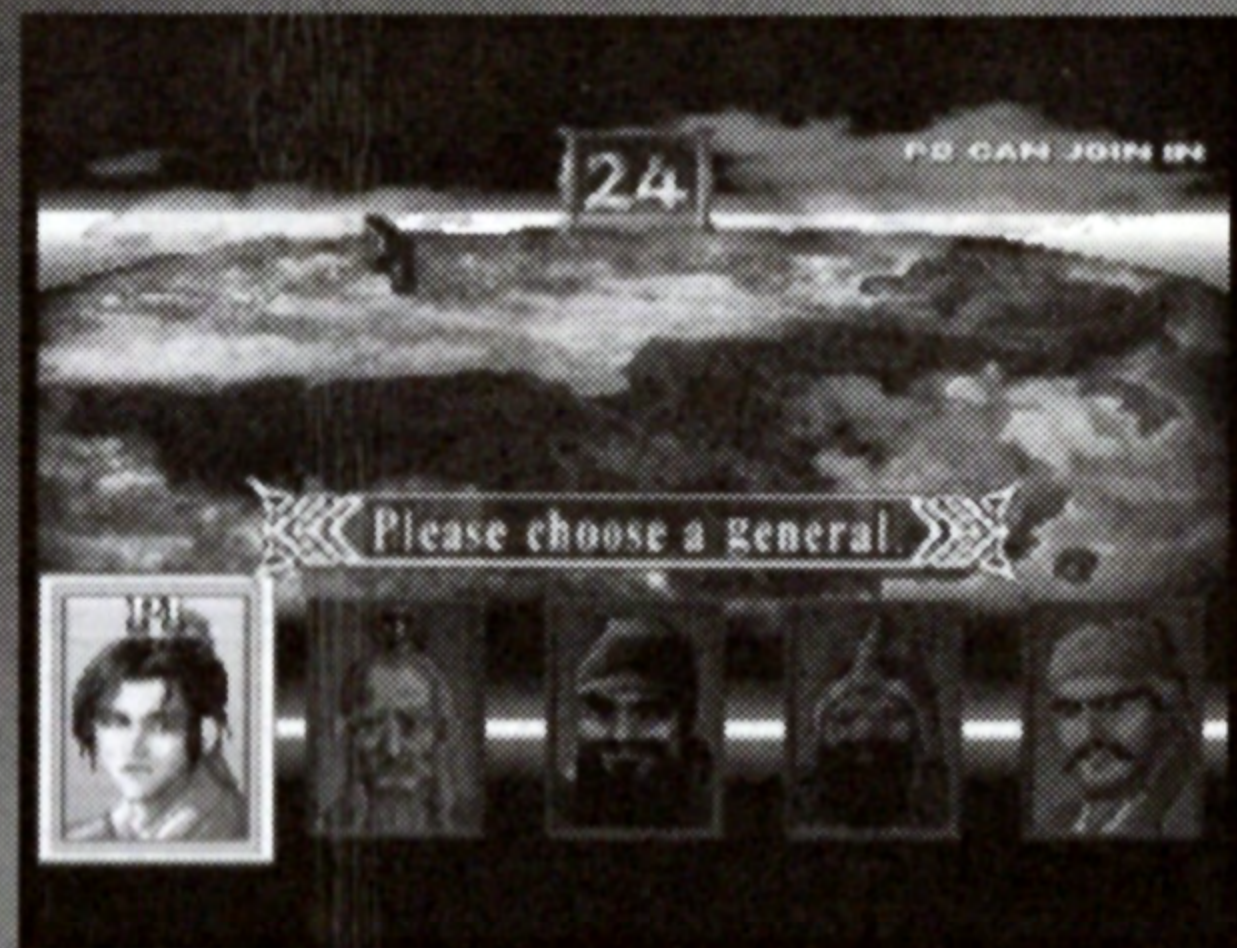
Battle for 2 players Allows you to play against a friend (you will need two controllers, one inserted into Controller port 1, the other into Controller port 2).



Battle Shanghai

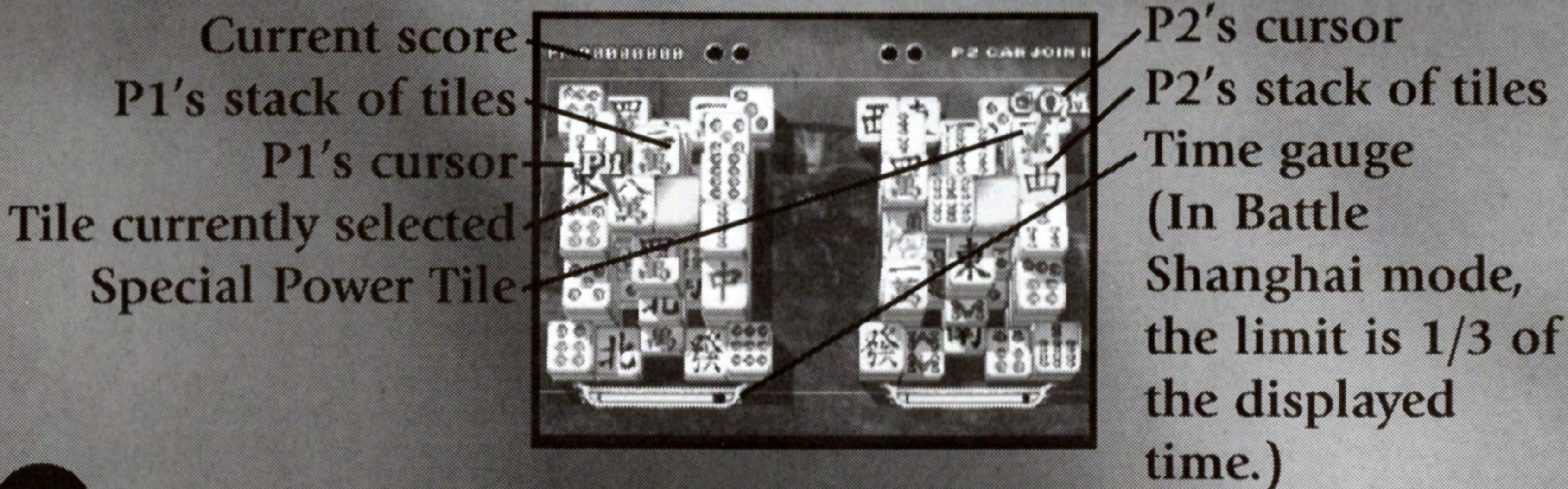
Selecting your character

Select one of the five characters. If you have chosen to "Battle against CPU", then once you have chosen your character, the computer will automatically select an opponent and start the game. If you are playing a "two-player game", then Player 1 selects a character first and then Player 2 selects a character.



You cannot both select the same character for the same game.

Screen Layout



Battle Shanghai



Pause Menu

If you press the Start button during a game, a pause screen comes up and the following menu is displayed. Select the option you want and then press the X button.

Continue Continue game from current position.

Quit game End current game and return to title screen.

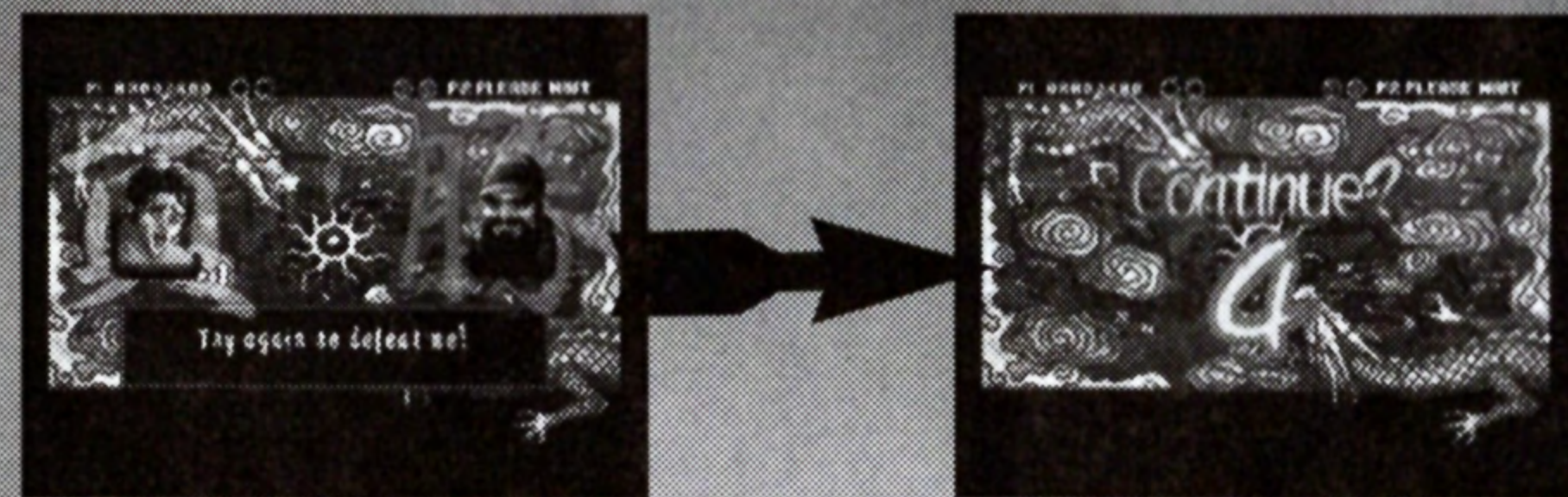
Original mode Switch to the default game in Original mode

Help and Back functions explained

See page 15.

End of Game

You win when you have beaten your opponent twice. An end of contest screen is displayed and you then move on to fight the next warlord.



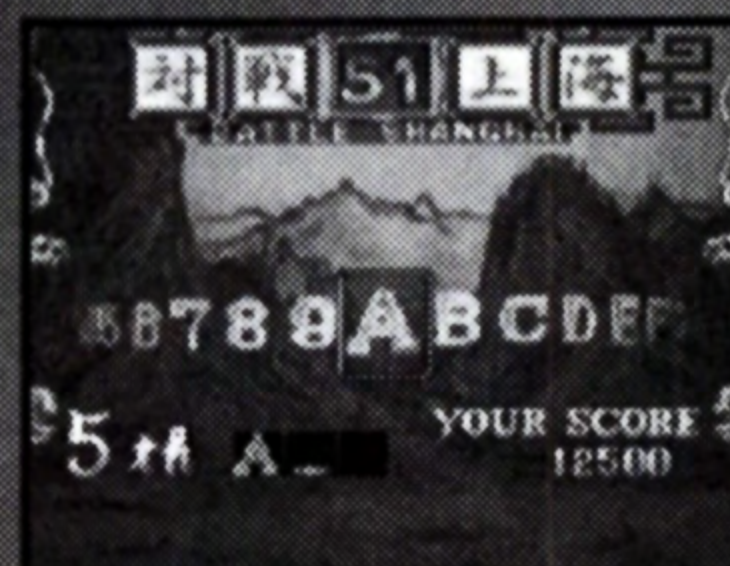
If your opponent gains two victories, then the game ends and switches to the Continue screen. By pressing the Start button within 10 seconds, you can continue the game.



Battle Shanghai

Entering your name

If you make one of the top five "High Scores", then you can enter your name. After the Game Over screen, a name entry screen will appear, and you can select and input letters using the directional buttons. When you have finished entering your name, put the cursor over "END" and press the X button. The High Scores screen will continue to be displayed.



The Characters



RYUEN



JYOTOKU



HOUTOUHI



MOUGAI



KAUNSYOU

Each and every one is a powerful warlord, ready to battle you for dominance of the Dragon Kingdom.

Battle Shanghai



Special power tiles

火 Burns up opponent's tiles so they vanish.

裏 Turns over all tiles in opponent's stack.

助 Shows the tiles you can pick.

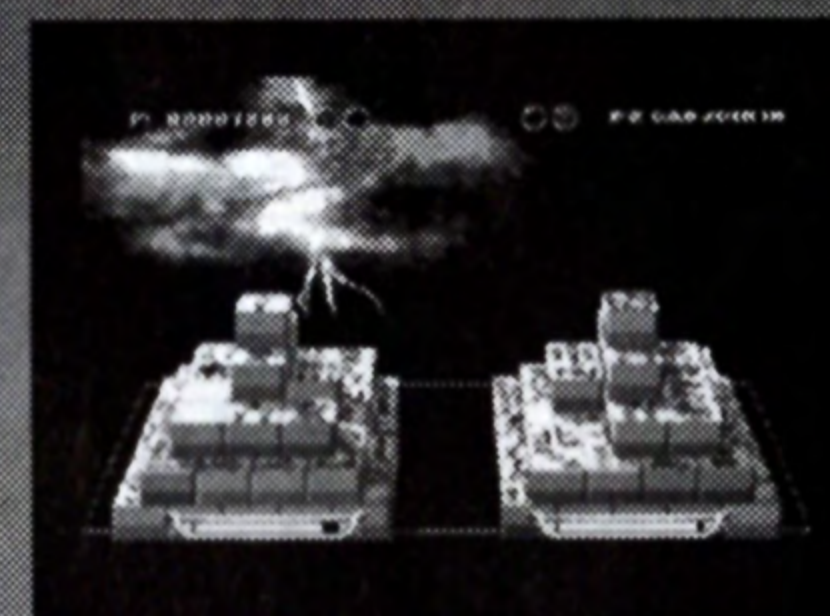
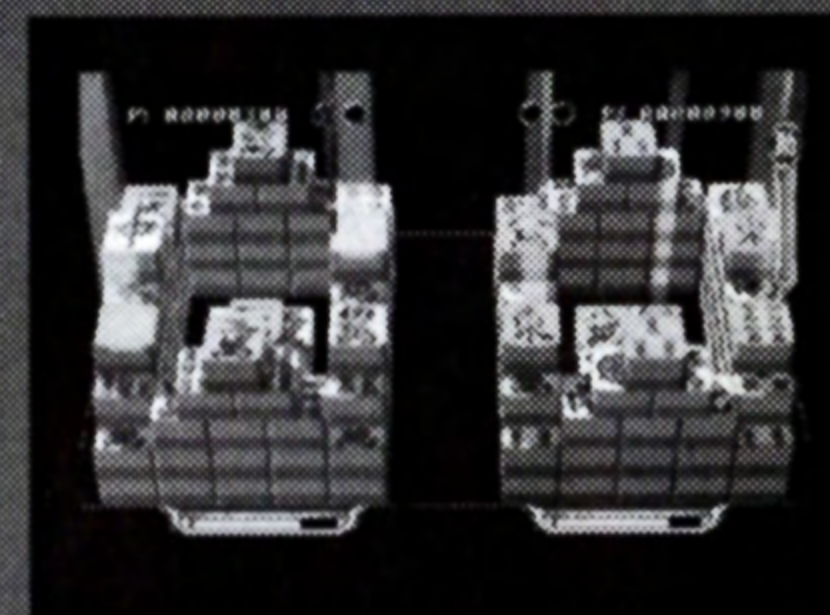
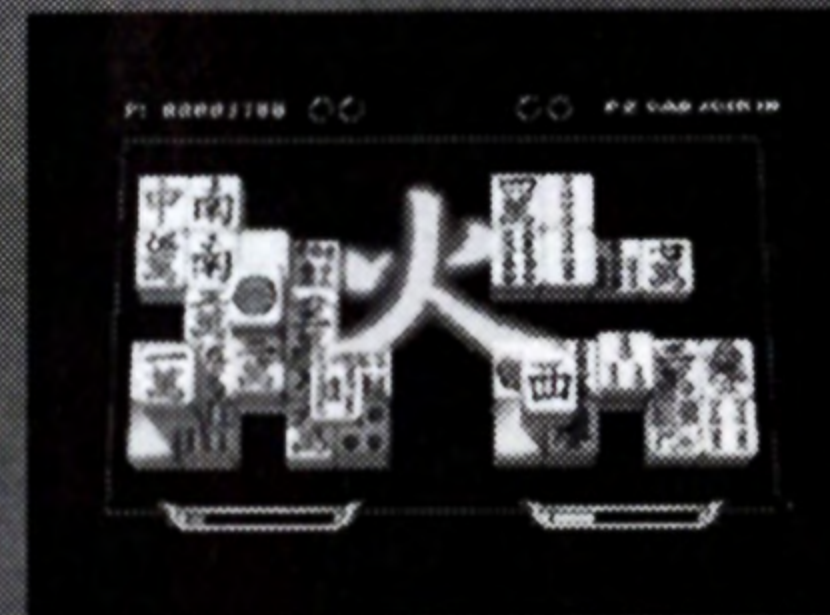
鏡 Reverses opponent's actions.

加 Adds tiles to the opponent's stack.

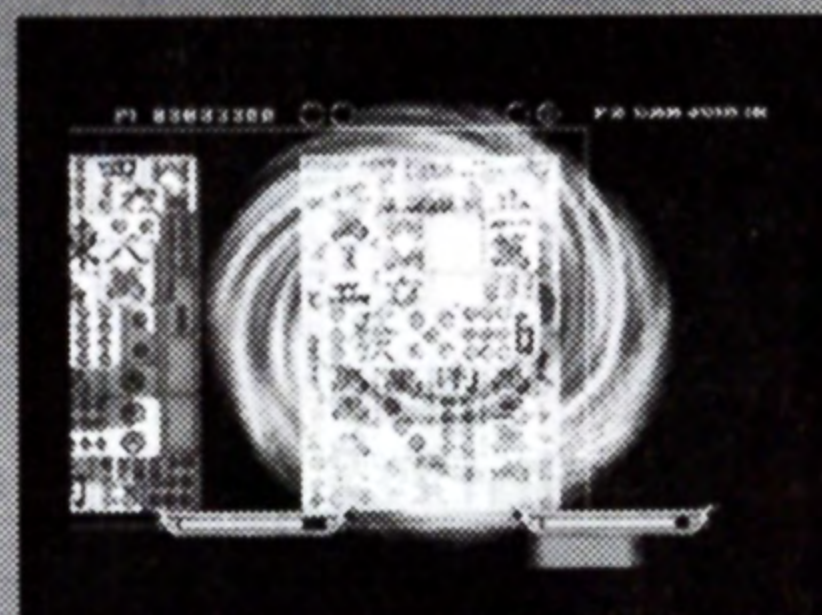
戻 Puts back three pairs on both player's own hand and opponent's hand.

光 Adds to player's own time.*

闇 Reduces opponent's time.*



* This has no effect if the time is set to infinity





Rolling Shanghai

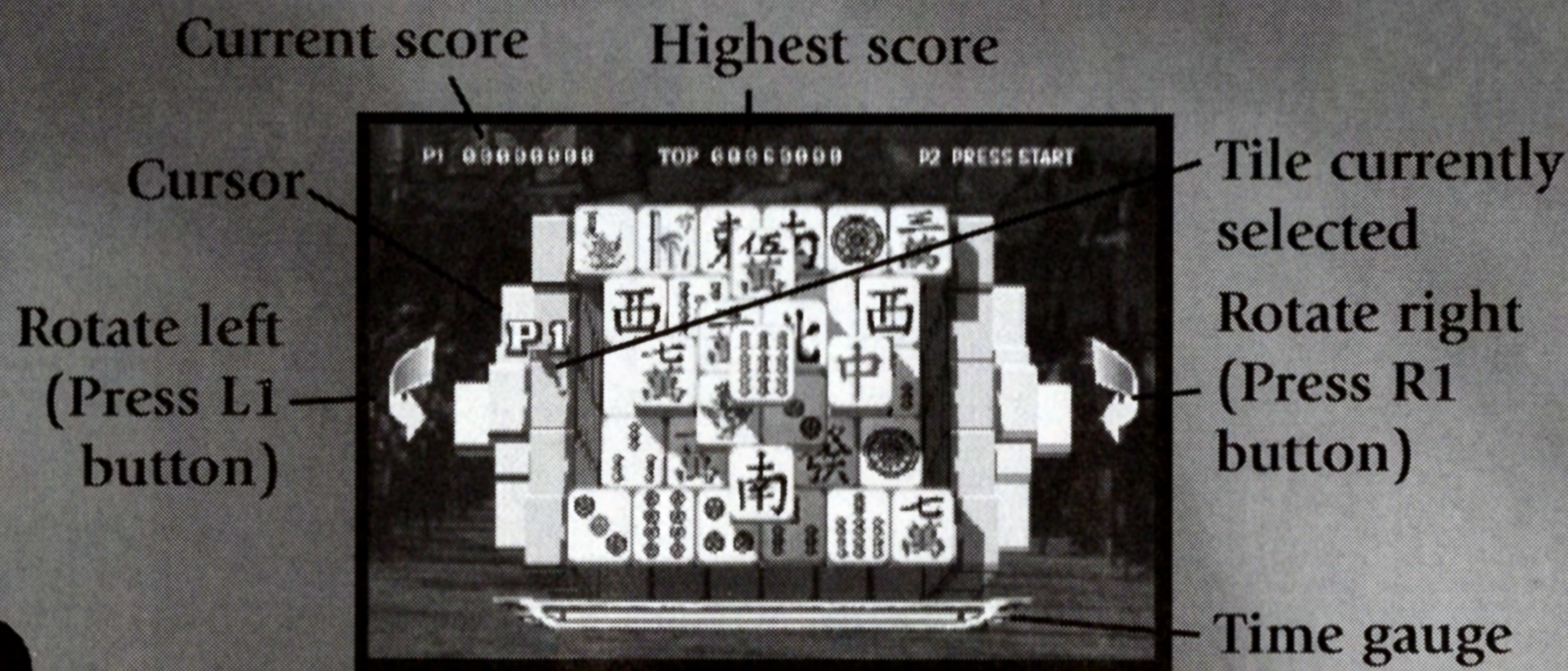
For the first time, a truly 3D Shanghai game! Tiles are piled up on four sides of a cube. You remove tiles by rolling the cube to the left and right and removing matching tiles just as is done in Classic Shanghai. A joint player mode involving two players is also possible.

Rules

Roll the cube to the left and right and select two matching tiles to remove them from the cube.

The directions are the same as for "Classic Shanghai". See page 17.

Screen Layout



Rolling Shanghai



Pause Menu

See page 20.

End of Game

You clear a stage when all the tiles have been removed from all four faces of the rolling cube. At the end of the stage screen, a password is displayed and the game then carries on to the next stage. If you get stuck (cannot make a valid move) or run out of time, the game ends and the Continue screen is displayed.



If you decide to continue, the following menu screen appears. Choose one of these options within 20 seconds and press the X button.



Same Pattern

Play from stage beginning using same pattern.

New Pattern

Play from stage beginning using new pattern.

Continue (not available if the game was deadlocked)

Continue current game from the exact point where you'd left off before.

Entering your name

If you earn a high score, then you can enter your name. See page 26.



Bonus Stages

In Arcade Mode's "Classic Shanghai" or "Rolling Shanghai" games, each time you clear 5 stages, a bonus stage appears. Depending on the stages you have already cleared, you may be awarded extra Help and Back functions or bonus points.

Higher or Lower?

In this game, you have to guess whether the numbers on the tiles in the bottom row will be higher or lower than the numbers on the tiles in the top row. Select either "higher" or "lower" and press the X button. Make your 4 choices within 60 seconds, and if you guess all four correctly, you win big bonus points. If you guess 1 to 3 times correctly, you win a small bonus. If you don't guess correctly at all, you will not receive any bonus points.



Guess the Tile

In this game, you have to guess where the golden tile is in a shuffled set of tiles. After the tiles have been shuffled, select one of the tiles and press the X button. Make 4 guesses within 60 seconds, and if all are correct, you win big bonus points. If you guess 1 to 3 times correctly, you win a small bonus. If you don't guess correctly at all, you will not receive any bonus points.



Sunsoft Limited Warranty

Sunsoft warrants to the original purchaser of this Sunsoft software product that the medium on which this computer program is recorded is free from defects in materials and workmanship for a period of ninety (90) days from the date of purchase. This Sunsoft software program is sold "as is" without express or implied warranty of any kind, and Sunsoft is not liable for any losses or damages of any kind resulting from use of this program. Sunsoft agrees for a period of ninety (90) days to either repair or replace, at its option, free of charge, any Sunsoft software product, postage paid, with proof of date of purchase, at its Factory Service Center.

This warranty is not applicable to normal wear and tear. This warranty shall not be applicable and shall be void if the defect in the Sunsoft software product has arisen through abuse, unreasonable use, mistreatment or neglect. **THIS WARRANTY IS IN LIEU OF ALL OTHER WARRANTIES AND NO OTHER REPRESENTATIONS OR CLAIMS OF ANY NATURE SHALL BE BINDING ON OR OBLIGATE SUNSOFT. ANY IMPLIED WARRANTIES APPLICABLE TO THIS SOFTWARE PRODUCT, INCLUDING WARRANTIES OF MERCHANTABILITY AND FITNESS FOR A PARTICULAR PURPOSE, ARE LIMITED TO THE NINETY (90) DAY PERIOD DESCRIBED ABOVE. IN NO EVENT WILL SUNSOFT BE LIABLE FOR ANY SPECIAL, INCIDENTAL, OR CONSEQUENTIAL DAMAGES RESULTING FROM POSSESSION, USE OR MALFUNCTION OF THIS SUNSOFT SOFTWARE PRODUCT.**

Some states do not allow limitations as to how long an implied warranty lasts and/or exclusions or limitations or incidental or consequential damages so the above limitations and/or exclusions of liability may not apply to you. This warranty gives you specific rights, and you may also have other rights which vary from state to state.

SUNSOFT, USA, 3151 AIRWAY AVENUE, SUITE F-109, COSTA MESA, CA 92626
TEL: 714 850 2700 FAX: 714 850 2710, Web : www.sunsoft-games.com

SUNSOFT

ACTIVISION

Shanghai is a registered trademark and
Shanghai True Valor is a trademark of Activision, Inc.

© 1999 Activision. All rights reserved.

Sunsoft is a registered trademark of Sun Corporation.

SUNSOFT, USA,

3151 AIRWAY AVENUE, SUITE F-109, COSTA MESA, CA 92626

TEL: 714 850 2700 FAX: 714 850 2710



Licensed by Sony Computer Entertainment America for use with the PlayStation game console. PlayStation and the PlayStation logos are registered trademarks of Sony Computer Entertainment Inc. The ratings icon is a trademark of the Interactive Digital Software Association. Manufactured and printed in the U.S.A. THIS SOFTWARE IS COMPATIBLE WITH PLAYSTATION GAME CONSOLES WITH THE NTSC U/C DESIGNATION. U.S. AND FOREIGN PATENTS PENDING.

SUNSOFT